



NEXT STEPS

PWLP will continue to engage in public consultation with stakeholders in the surrounding area. PWLP is committed to engaging landowners, public stakeholders and potentially affected Aboriginal communities about the Project.

After receiving feedback from stakeholders following this mailout, PWLP intends to file a wind power plant application with the Alberta Utilities Commission (AUC) in early 2017. PWLP is committed to sharing information about the Project and working with the public to ensure that stakeholder input and concerns are heard and addressed.

Stakeholders are encouraged to participate throughout this process. We hope you will contact us if you have any questions or concerns or if you would like to meet to discuss the Project. A summary of stakeholder comments will be incorporated into the wind power plant application we submit to the AUC.

To learn more about the application and review process, please contact the AUC at:

Phone: 780-427-4903 (toll-free by dialing 310-0000 before the number)
Email: consumer-relations@auc.ab.ca

ABOUT US



Paintearth Wind Project LP (PWLP) is a partnership between Potentia Renewables Inc. and Greengate Power Corporation.

Potentia Renewables Inc. is an independent power producer focused on developing, managing and operating renewable energy systems. Potentia Renewables Inc. is a wholly owned subsidiary of Power Corporation of Canada, a diversified international management and holding company.

Greengate Power Corporation is a leading renewable energy company based in Calgary, Alberta. To date, Greengate has successfully developed 450 MW of operating wind projects in Alberta. These projects represent over 30% of the wind energy generated in Alberta and provide a clean source of energy to approximately 200,000 homes.

CONTACT US

Paintearth Wind Project LP,
by its general partner Paintearth Wind Project Ltd.
Suite #133
#100, 111 – 5 Ave SW
Calgary, AB T2P 3Y6

Dan Tocher
Stakeholder Relations Manager
Email: info@paintearthwind.com
Toll Free: 1.855.221.1888
Web: www.paintearthwind.com



Privacy Commitment: PWLP is committed to protecting your privacy. Collected personal information will be protected under the provincial Personal Information Protection Act (PIPA). As part of the regulatory process for new generation projects, PWLP may be required to provide your personal information to Alberta Utilities Commission (AUC). For more information about how PWLP protects your personal information, visit our website at www.paintearthwind.com or contact us directly via phone toll-free at 1.855.221.1888.



INTRODUCTION

Paintearth Wind Project LP (PWLP) would like to thank everyone for your attendance at our open house on October 26, 2016 and for your continued feedback on the Paintearth Wind Project (Project). We greatly value our relationship with the local communities and appreciate your continued interest in the Project.

Over the last few weeks, we received a lot of great feedback from stakeholders that we have incorporated into the latest Project design. This newsletter will provide you with an update on these changes and next steps for the Project.

PROJECT LAYOUT UPDATES

Twelve wind turbine locations have been removed (8, 13, 14, 15, 21, 22, 23, 32, 33, 40, 42, 43) due to concerns that were expressed by landowners and to accommodate updated constraints. Seven wind turbine locations (4, 11, 25, 39, 41, 51 and 55) have slightly moved on various quarter sections to accommodate updated constraints.

The Project will now include the installation of up to 46 wind turbines instead of 58 wind turbines. These changes are outlined on the Project Layout Comparison Map included as an insert to this newsletter. Proposed Project Map #2 shows the updated layout for the wind turbines, Project substation, O&M building, access roads and underground / above ground collector system.

COMMUNITY FUND AND INVOLVEMENT

PWLP is pleased to announce that it is currently in the process of setting up a community development fund for the Project. Once under construction, PWLP will provide the community with a funding commitment through the Project life, and will work with existing community representatives to support local initiatives and projects. More details on the fund will be shared with the community as the Project progresses. This community development fund will be in addition to the municipal tax revenues generated by the Project.

PWLP is also interested in supporting local events and activities in the community. Please let PWLP know if there are any ways that we can support local initiatives in the community.

IN THIS NEWSLETTER, YOU WILL FIND INFORMATION ON:

- PROJECT LAYOUT UPDATES
- COMMUNITY FUND AND INVOLVEMENT
- YOUR QUESTIONS ANSWERED
- NEXT STEPS IN THE ALBERTA UTILITIES COMMISSION (AUC) PROCESS

INSERT TO THIS NEWSLETTER INCLUDES:

- PROPOSED PROJECT MAP #2
- PROJECT LAYOUT COMPARISON

YOUR QUESTIONS ANSWERED

Q: How do wind turbines work?

A: Wind turbines work on the same principle that allows airplanes to fly. The wind doesn’t push the blades, but passes over them. The resulting pressure difference between the upper and lower surfaces creates lift, which causes the rotor to turn. As the blades of a wind turbine turn, the kinetic energy of the wind is converted into mechanical energy, which is transmitted through a drive shaft to an electrical generator in the nacelle. The resulting electrical current travels via underground and overhead cables to a substation, where it is converted to a higher voltage for the larger electricity transmission or distribution grid. From there, it’s delivered to the electric utility and customers. Continuous innovation and reduction in costs has made wind energy one of the most economic sources of large-scale electricity generation.

Q: Where does the electricity go?

A: The electricity from the Project will be sent to the Alberta Interconnected Electric System (AIES) via a new 240 kilovolt (kV) overhead transmission line built from the proposed Project substation to the existing ATCO Electric 9L93L line north of the Project. The interconnection from the proposed Project substation to the AIES will be managed by ATCO Electric. The Alberta Electric System Operator (AESO) manages the AIES.

Q: Do wind turbines produce sound?

A: Yes, wind turbines produce sound. The Project is designed so that any sound generated by the wind turbines is within regulations set out by the AUC. The night-time permissible sound level to a residence in a quiet rural area is defined by AUC Rule 012 as 40 dBA of cumulative sound including the Project, ambient sound levels and adjacent energy industry facilities.

For reference:
50 dBA is the sound level inside an average urban home.
40 dBA is similar to the typical sound in a library
35 dBA is the average background sound level in rural Alberta

Q: What constraints did you consider when designing the Project?

A: PWLP considered numerous constraints in the design of the Project such as setbacks from roads, land boundaries and environmental features. We also accounted for noise, shadow flicker and landowner preferences. The Project was designed to comply with all regulations and rules in Alberta for wind energy development.

Q: How long is the construction phase and how will PWLP manage extra noise, traffic and dust?

A: The construction period is expected to last twelve months. During this time, there will be an increase in construction traffic. Access to the Project will be through Highway 12, Highway 36 and existing local roads. We will work closely with the County of Paintearth to ensure dust mitigation measures are in place and impact on local residences is kept to a minimum.

Q: How will this impact Property Values?

A: Multiple studies have consistently found that wind energy projects do not negatively impact property values. In fact, wind energy projects provide new sources of stable revenue for municipalities and landowners in the form of taxes and lease payments. **Please visit our website: www.paintearthwind.com and CanWEA’s website: www.canwea.ca for a link to studies on property values.**

Q: Do wind turbines have a health impact?

A: Numerous independent reviews and studies conclude that wind turbines are not harmful to human health – in fact, wind energy reduces harmful air emissions and creates no harmful waste products when compared with other sources of electricity.

For further information, please visit: www.canwea.ca/wind-facts/your-health

Q: What happens after 20+ Years?

A: Most wind energy projects are designed to last at least 25 years and it’s entirely possible that the equipment could be replaced at the end of its design life and the Project could be re-energized. However, if at the time it makes sense to decommission the Project, the salvage value of materials typically offsets the costs of decommissioning. PWLP will be responsible for decommissioning the Project.

Q: How will this impact the environment?

A: All wind energy projects must follow Alberta Environment and Parks (AEP) guidelines, “Wildlife Guidelines for Alberta Wind Energy Projects – Government of Alberta – Fish and Wildlife Division – Sustainable Resource Development, September 19, 2011”. The guidelines outline requirements to avoid and mitigate environmental impacts. We are completing environmental studies to ensure we minimize the potential impacts of our Project and meet setbacks from environmental features wherever possible.

Please visit our website: www.paintearthwind.com for links to studies about wind energy and wildlife.

Q: How many jobs will be created during construction?

A: During peak construction, there will be more than 100 jobs created.

Q: Will the wind turbines have lights?

A: In general, met towers, cell phone towers and wind turbines may be difficult for pilots to see if they are unmarked. Transport Canada and NAV Canada require lighting on tall structures including wind turbines. The Project will be lit according to the Transport Canada and Nav Canada rules.

Please visit our website: www.paintearthwind.com for a link to the rules. Or alternatively they can be found on the Transport Canada website: www.tc.gc.ca.

Q: How will crop spraying be impacted?

A: Spray planes can operate near and around wind energy projects. Spray planes typically operate in low wind or calm conditions. We will work to ensure reasonable arrangements can be made when spraying is scheduled.

Q: How will the wind turbines impact my view?









A: We understand the visual impact of wind turbines is a concern to some stakeholders. We have sited wind turbines with the intent of reducing noise and visual impacts to residences in the area. A series of visual simulations of the Project were shown at the open house to show what the Project will look like from various locations.

Please visit our website: www.paintearthwind.com for a link to these visual simulations.

Date: 2016-11-29

46 TURBINE PROPOSED PROJECT MAP #2

Note: turbine numbers are not in sequential order

-  Current Project Boundary
-  Proposed Turbine Location
-  Proposed Project Substation and Proposed O&M Building
-  Potential Underground or Above Ground Collector (34 kV)
-  Potential New Road
-  Residence
-  Existing Turbine (Halkirk)
-  Major Highway
-  Minor Highway
-  Paved Road
-  Other Road
-  Municipal District and County Boundary
-  Township Line
-  Section Line

T.38

Version: 10
Date: 2016-11-30
Layout: 20161104
Prepared By: WSP

Datum: NAD 83
Projection: UTM Zone 12N
Scale: 1:100,000



Data Credits: Alberta Township System, roads and water: AltaGIS (c) Government of Alberta. Imagery: Source: Esri, DigitalGlobe, GeoEye, Earthstar Geographics, CNES/Airbus DS, USDA, USGS, AeroGRID, IGN, and the GIS User Community

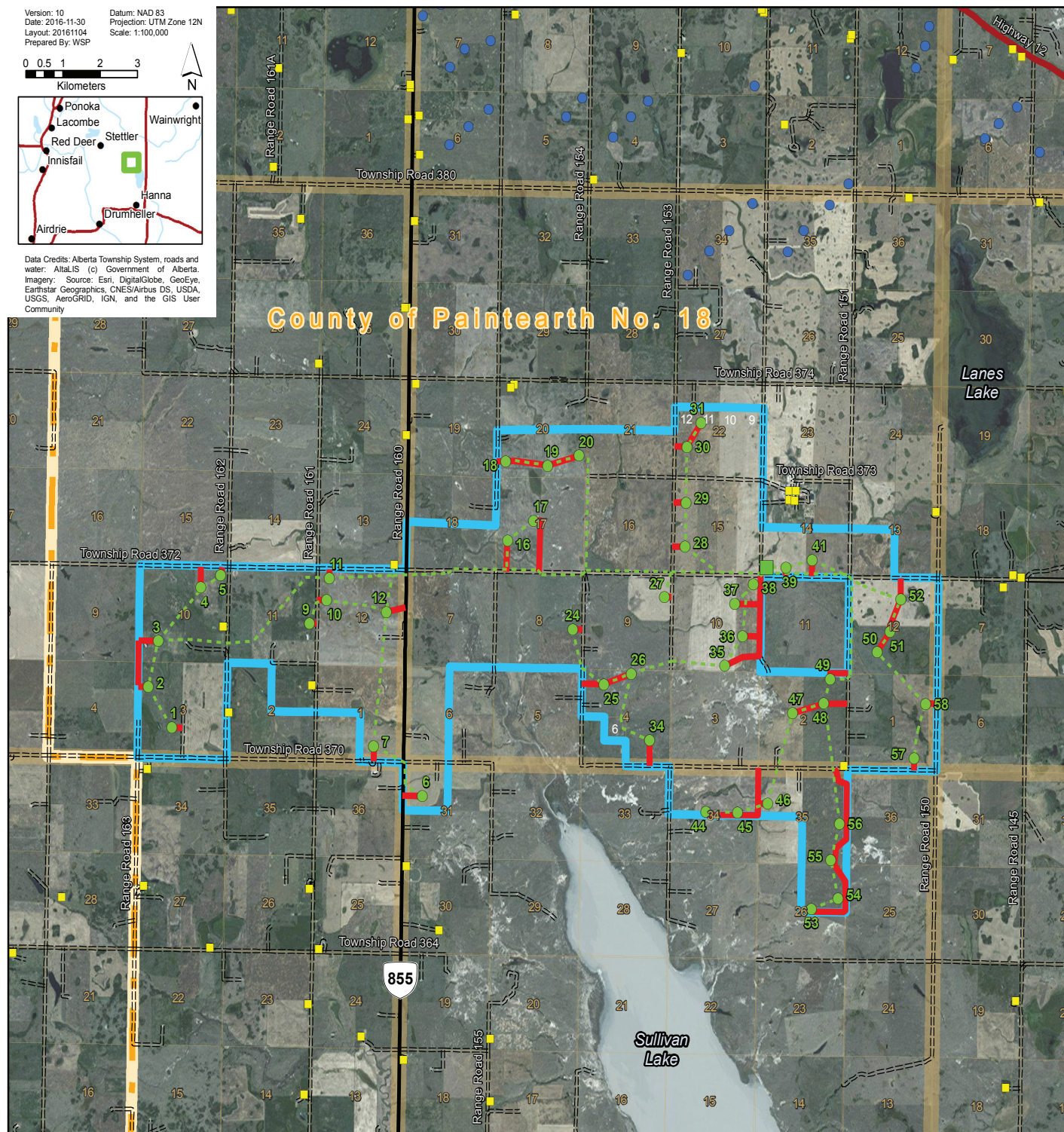
T.37

T.36

R.16







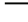
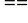

R.15

R.14 W4M



Date: 2016-11-29

PROJECT LAYOUT COMPARISON MAP

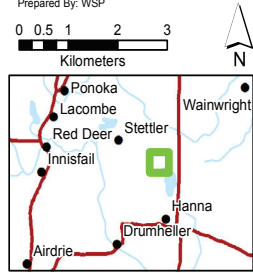
-  Current Project Boundary
-  Proposed Turbine Location
-  Previous Turbine Location *
-  Removed Turbine Location *
-  Previous Project Boundary *
-  Proposed Project Substation and Proposed O&M Building
-  Residence
-  Existing Turbine (Halkirk)
-  Major Highway
-  Minor Highway
-  Paved Road
-  Other Road
-  Township Line
-  Section Line

* Changes compared to Proposed Project Map dated 2016-10-05

TURBINES CHANGED	CHANGE	WHEN
11, 25, 51, 55	Moved	After Newsletter 1 and Before Open House
13, 14, 15	Removed	After Newsletter 1 and Before Open House
4, 39, 41	Moved	After Open House
8, 21, 22, 23, 32, 33, 40, 42, 43	Removed	After Open House

T.38

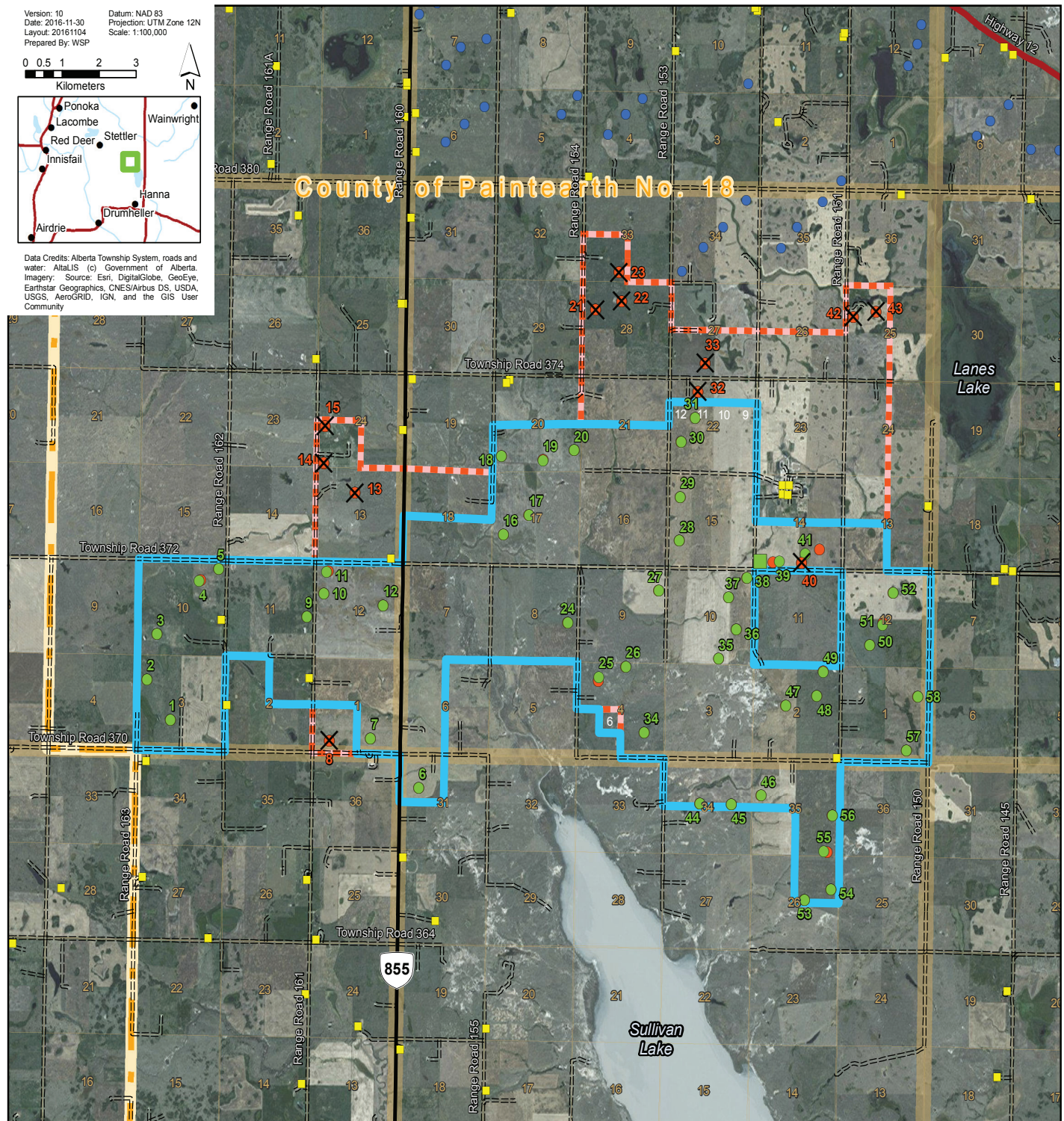
Version: 10
Date: 2016-11-30
Layout: 20161104
Prepared By: WSP



Data Credits: Alberta Township System, roads and water: AltaGIS (c) Government of Alberta. Imagery: Source: Esri, DigitalGlobe, GeoEye, Earthstar Geographics, CNES/Airbus DS, USDA, USGS, AeroGRID, IGN, and the GIS User Community

T.37

T.36



R.16

R.15

R.14 W4M